

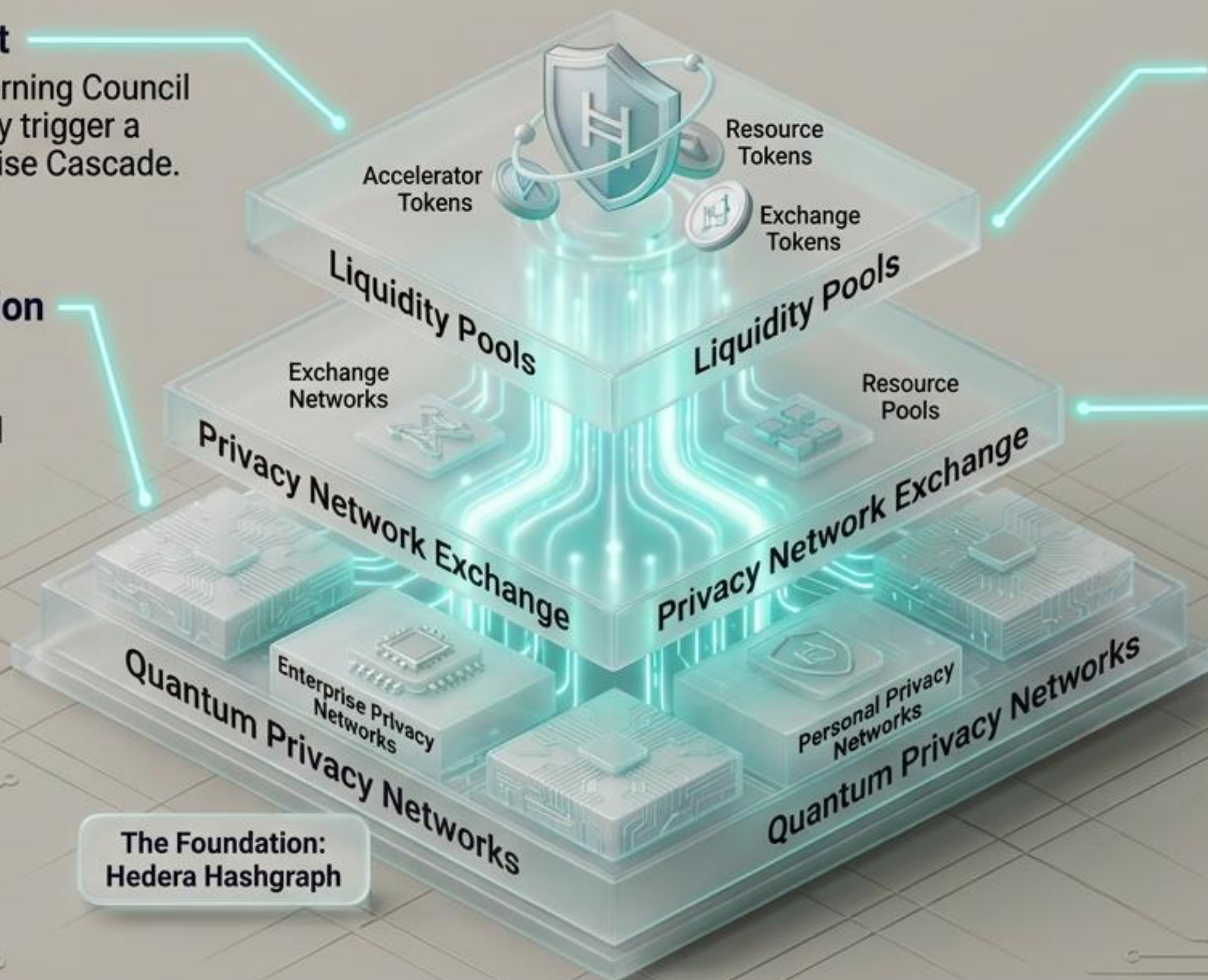
Quantum Privacy Network & Hedera: The PNX Settlement Foundation

The Catalyst

Hedera's Governing Council can unilaterally trigger a global Enterprise Cascade.

PNX Settlement Foundation

Every QPN token issued, settlement anchored, and governance decision recorded routes through Hedera.



The Transformation

Tier 1 QPN participation transforms Hedera from a competitive DLT to a GDP-scale infrastructure backbone.

The QPN Opportunity

Hedera anchors a \$35T-\$95T Exchange Network ecosystem within the global Privacy Network Exchange.

The Foundation:
Hedera Hashgraph

So What? Hedera's current ~\$8B market cap prices a competitive DLT; capturing the QPN settlement layer represents a 500x-2,700x value capture multiple.

Hedera Ecosystem Activation: Contribution Graphs Building to Enterprise Cascade

Hedera Enterprise Ecosystem

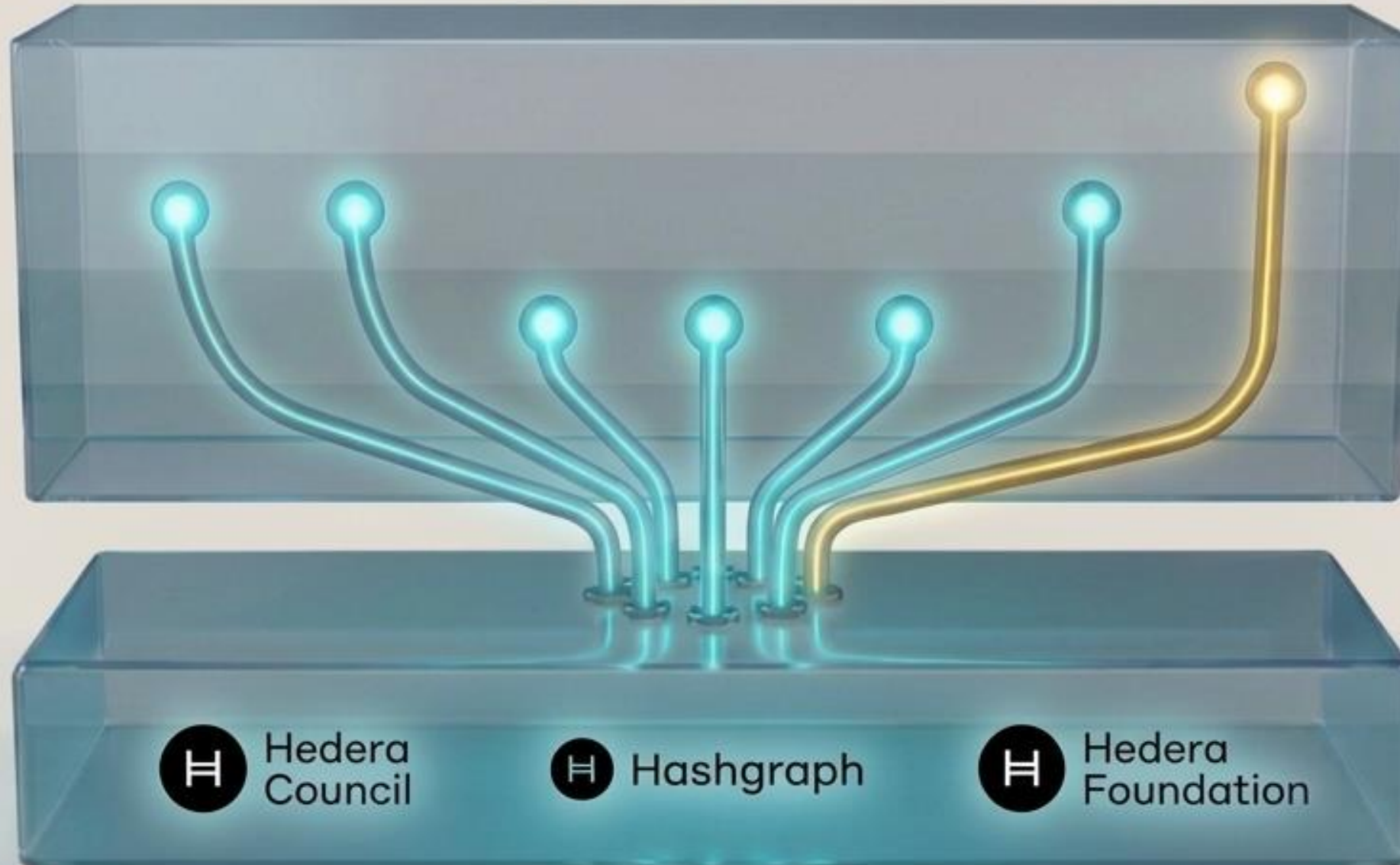


Strategic Sponsorship

Participation Announced

Review / Validation

Engagement



Parallel outreach creates a self-reinforcing race to commit.

The Hedera Community

The Fast-Track Path:

Executive relationship bypass to Tier 1 Anchor status, amplifying QP Rewards for all Hedera community contributors

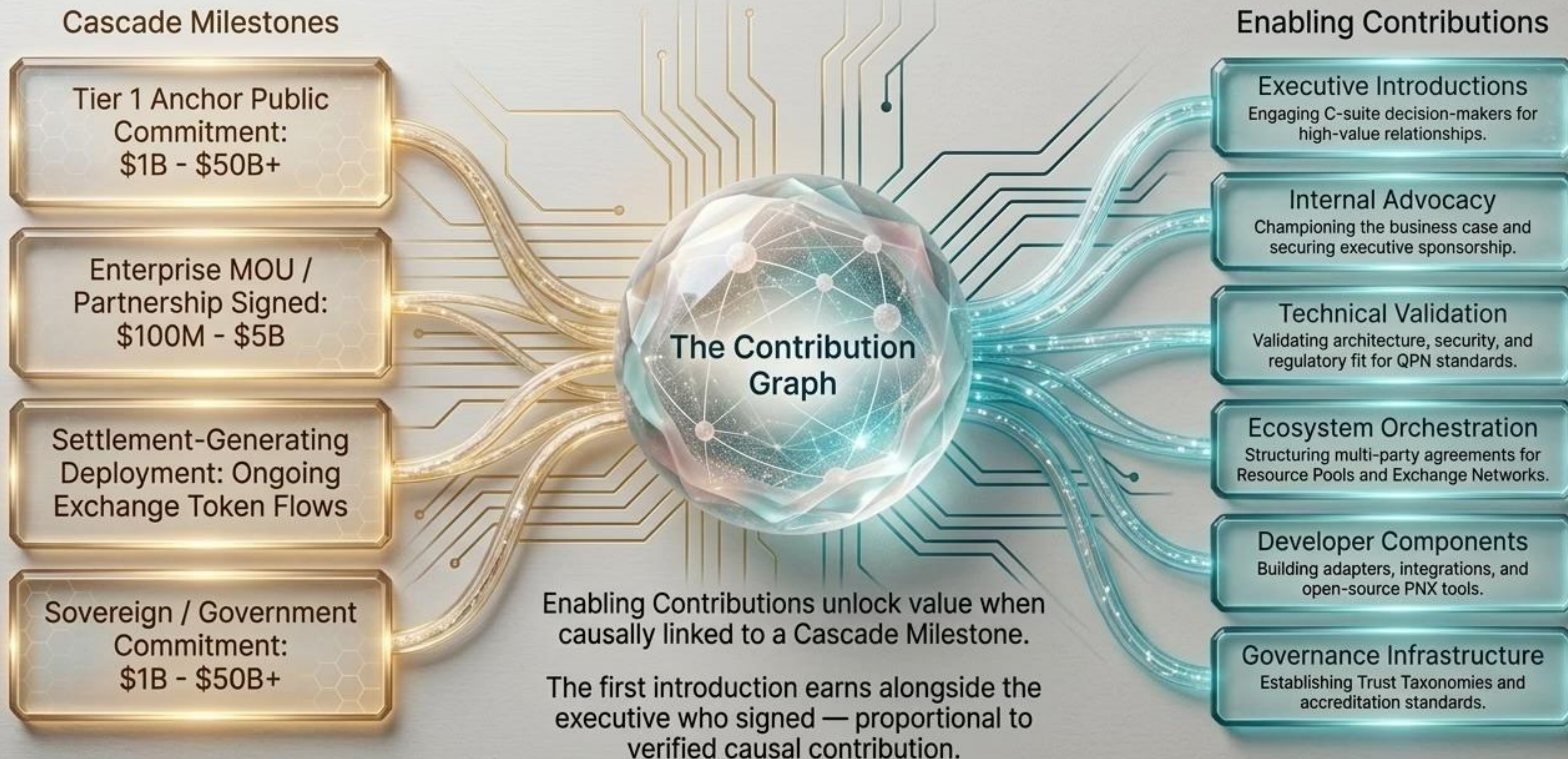
QP Rewards: Everyone in the contribution graph -- staff, developers, internal contacts -- earns through their personal Quantum Privacy Cell.

Dual-Use Foundation:

Existing Hedera infrastructure, ecosystem, and applications provide the technology, deployment sites & governance for immediate activation.

The Race is On: Only one large enterprise needs to reach full sponsorship to trigger a global cascade.

Catalyst Contributions & QP Reward Ranges

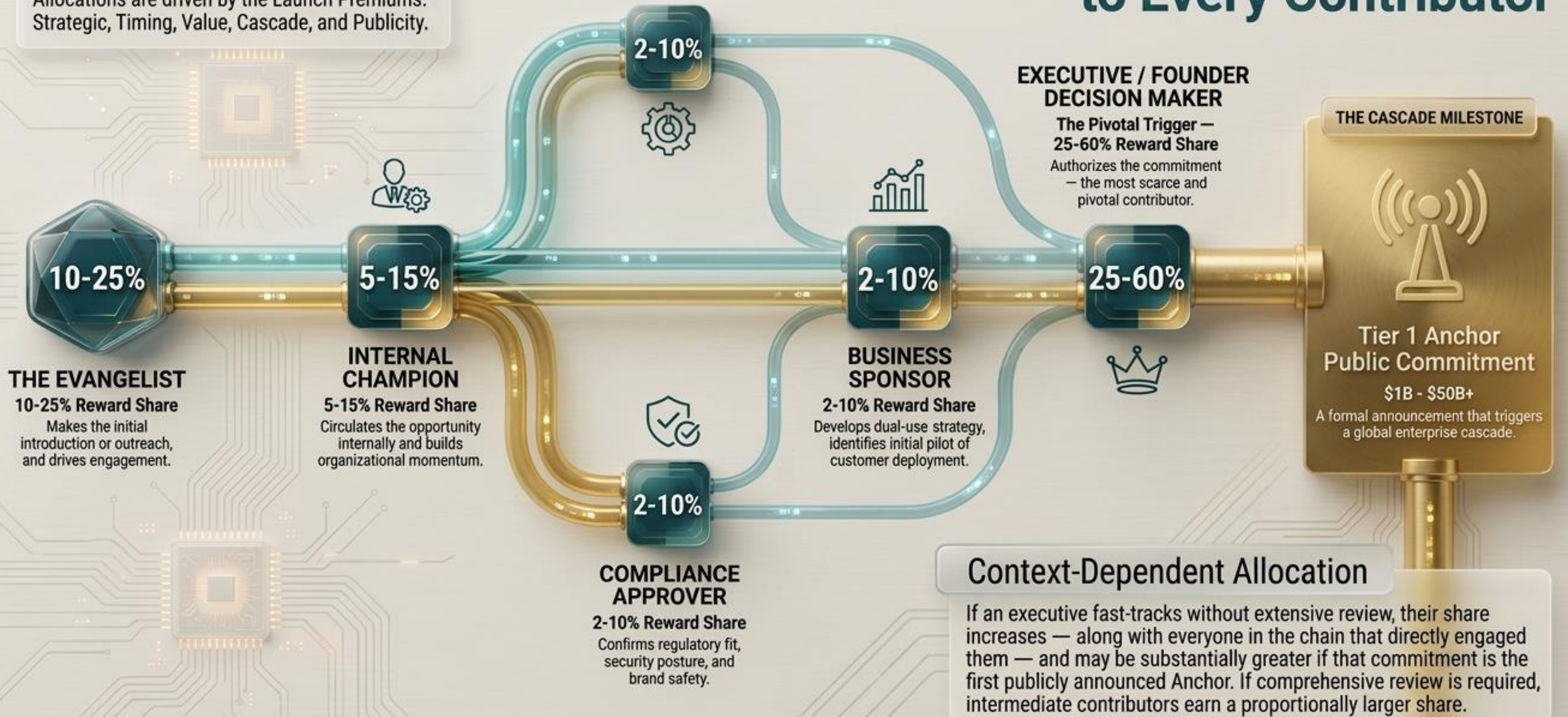


Verified Attribution

The Catalyst Contribution Graph traces causation backward. Starting the chain earns credit for the entire downstream result.

Allocations are driven by the Launch Premiums: Strategic, Timing, Value, Cascade, and Publicity.

The Contribution Graph: How QP Rewards Flow to Every Contributor



QPN Catalyst: Record Contributions From the Tools You Already Use

Five Catalyst Contribution Modes

Active Capture

Open the app, narrate by voice, paste text, or upload a document. Under 60 seconds.

Directed Capture

CC the Catalyst agent on any email, tag in Slack, or forward a meeting summary, documents, or follow-ups. Zero extra effort.

Ambient Capture

With individual opt-in, the agent monitors authorized tools and automatically detects, proposes, and records contributions.

Institutional Processing

Enterprise-authorized retrospective processing of email and messaging archives, CRM, code repos, and document stores.

Evangelism

Spread the word through viral EasyAccess content and messaging. Everyone who joins through your efforts earns you attribution-tracked rewards.

Catalyst Contribution Ledger

AI-Assisted Capture & Cryptographic Verification.



Your Privacy is Guaranteed



Attribution Without Disclosure

Get full credit for contributions without exposing proprietary content, trade secrets, or confidential employer information. The system verifies what you did — not what it contained.



Participation is Undetectable

Each Quantum Privacy Cell is a confidential Delaware LLC Series. Its existence and all contribution records are trade secrets. It creates no employment, partnership, or agency relationship. Employers have no legal or technical means to detect or compel disclosure.



Legally Protected Activity

Contributions are either dual-use work activities or constitutionally protected personal advocacy. Federal and state labor protections prohibit employer retaliation for lawful off-duty participation.



Automated Compliance

Every contribution is screened by a Privacy Preserving Compliance Service. Conflicts are automatically reclassified and redirected to public benefit. Deferred Activation ensures compliance is verified before value is distributed.

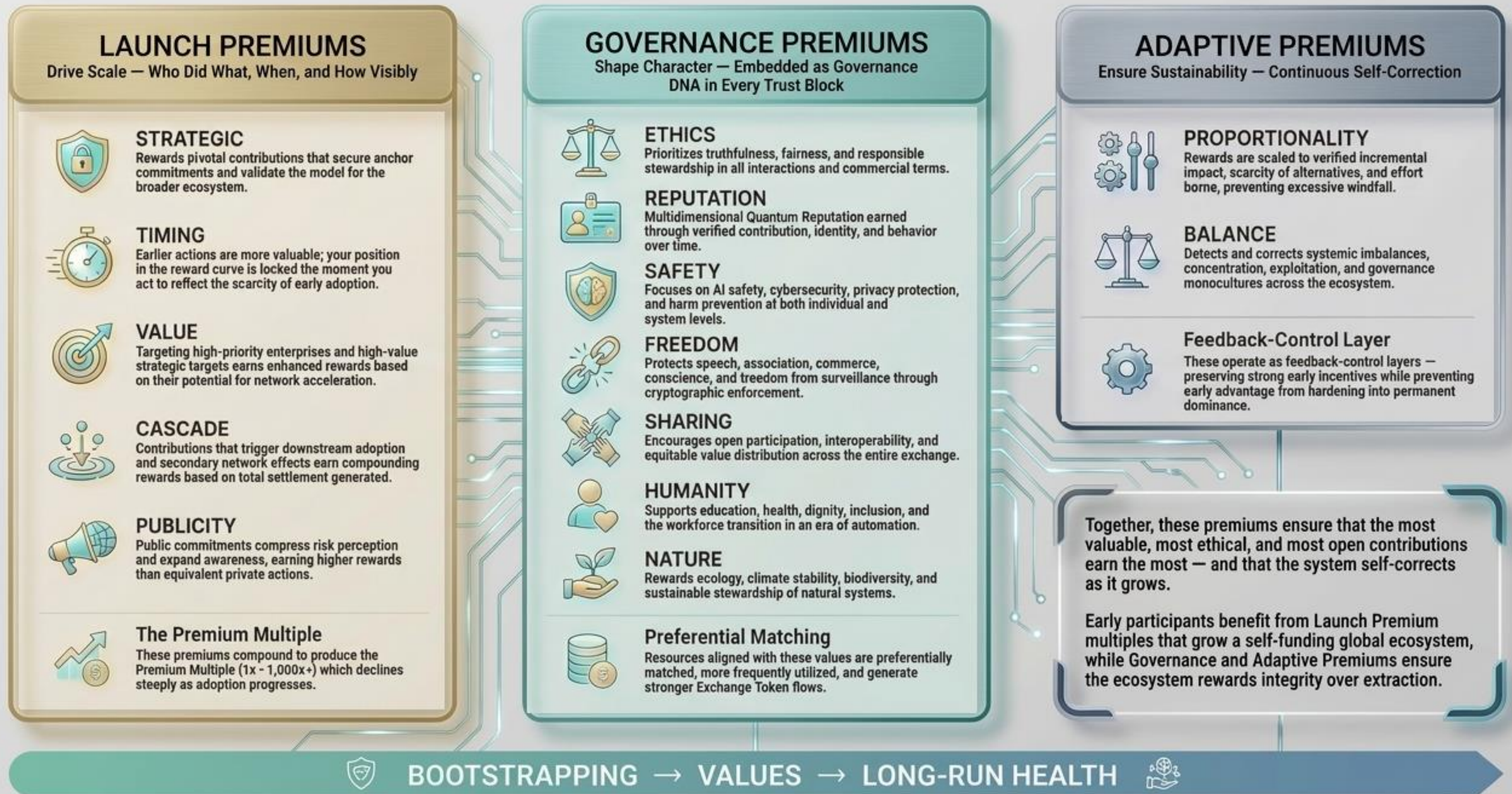


Cryptographic Receipts

Every contribution generates a SHA 256 fingerprinted, tamper-detectable receipt downloadable as PDF with QR code.

“ Verified Attribution: Your position in the contribution graph is locked from the moment you record a contribution — and no one outside the system can see that you did. ”

The Unified Trust Model Premiums: How QP Rewards are Allocated



The Catalyst Opportunity: Asymmetric Rewards for Early Pioneers

Catalyst Participation Offers Massive Rewards to Pioneers

Maximum Gain



**100-1,000x
Premium Multiple**

Pioneer Rewards compound across all five Launch Premiums, earning orders of magnitude more today than after adoption cascades are triggered.



Durable First-Mover Positioning

Early entrants lock in trust taxonomy anchoring, routing centrality, and Incentive Pool allocations that are architecturally non-replicable by late-comers.



Compounding Cascade Credit

Your contribution graph earns permanent attribution for every downstream commitment your outreach triggers across enterprises, sectors, and geographics.



Governance DNA Authorship

Early contributors shape the Trust Criteria embedded in every Trust Block, creating a governance genome inherited by the entire ecosystem that amplifies ongoing rewards.

No Risk

At No Cost or Downside Risk



No Incremental Investment

Dual-use operations leverage activities you are already performing, requiring no new budget, capital allocation, or infrastructure.



No Approvals Required

Universal Compliance through personal Quantum Privacy Cells requires no employer disclosure, regulatory filing, or management authorization.



Zero-Marginal-Cost Reuse

Existing infrastructure, spending, governance, and data relationships are reused without additional cost to the individual or enterprise contributor.

Laggard Penalty

With a Permanent Loss of Opportunity for Those That Wait



**Enterprise Laggard Penalty:
~85-90%**

Late-moving enterprises forfeit first-mover topology and founding-phase economics while retaining only basic, non-strategic operational value.



**Individual Laggard Penalty:
~95-99%+**

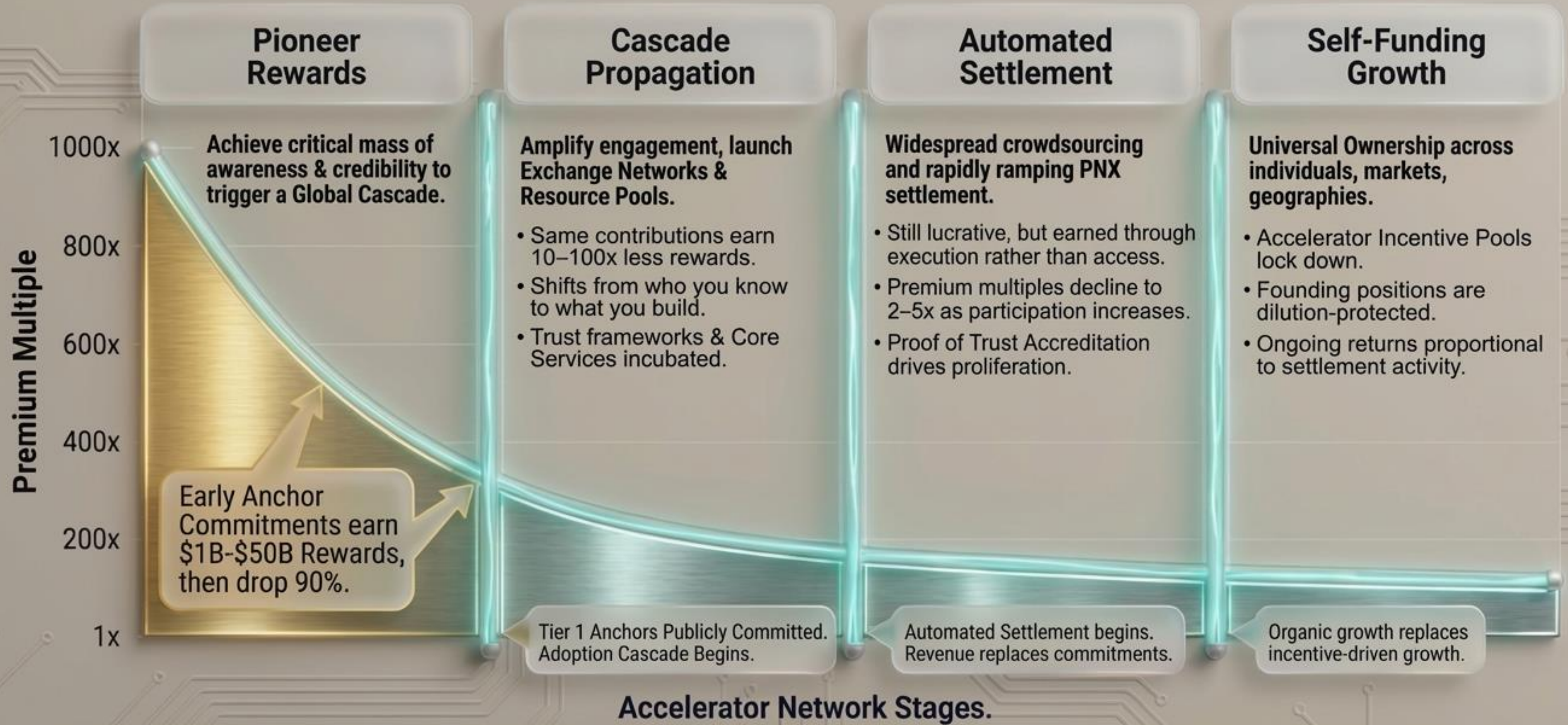
Individual access and advocacy value saturate rapidly, a multi-billion dollar introduction at Stage 1 drops to minimal value once commitment graphs grow.

Immediate Catalyst Participation is the Dominant Strategy

Participation costs nothing, risks nothing, and captures value that declines permanently with every day of delay.

"Act today to lock your position: The person who acts today earns alongside every downstream result their contribution graph enables—and their position is locked from the moment they act."

Premium Multiple Trajectory – Why Early Contributions Are Worth Dramatically More



The time window for capturing multi-billion dollar rewards for executive intros is months, not years. A single public anchor commitment triggers a Global Cascade of awareness and adoption, leading to a permanent drop in the Premium Multiple.

Universal Compliance: Hardware Trust Meets Verifiable Governance

Hardware-Rooted Trust



NVIDIA GPUs and Intel processors provide Trusted Execution Environments — hardware-enforced isolation where AI operations execute with cryptographic attestation.

Verifiable Compute



QUANTUM
PRIVACY
DOMAIN

EQTY Lab's Verifiable Compute generates cryptographic certificates for AI operations anchored on the Hedera Consensus Service, supporting Universal Compliance via Quantum Privacy Domains.

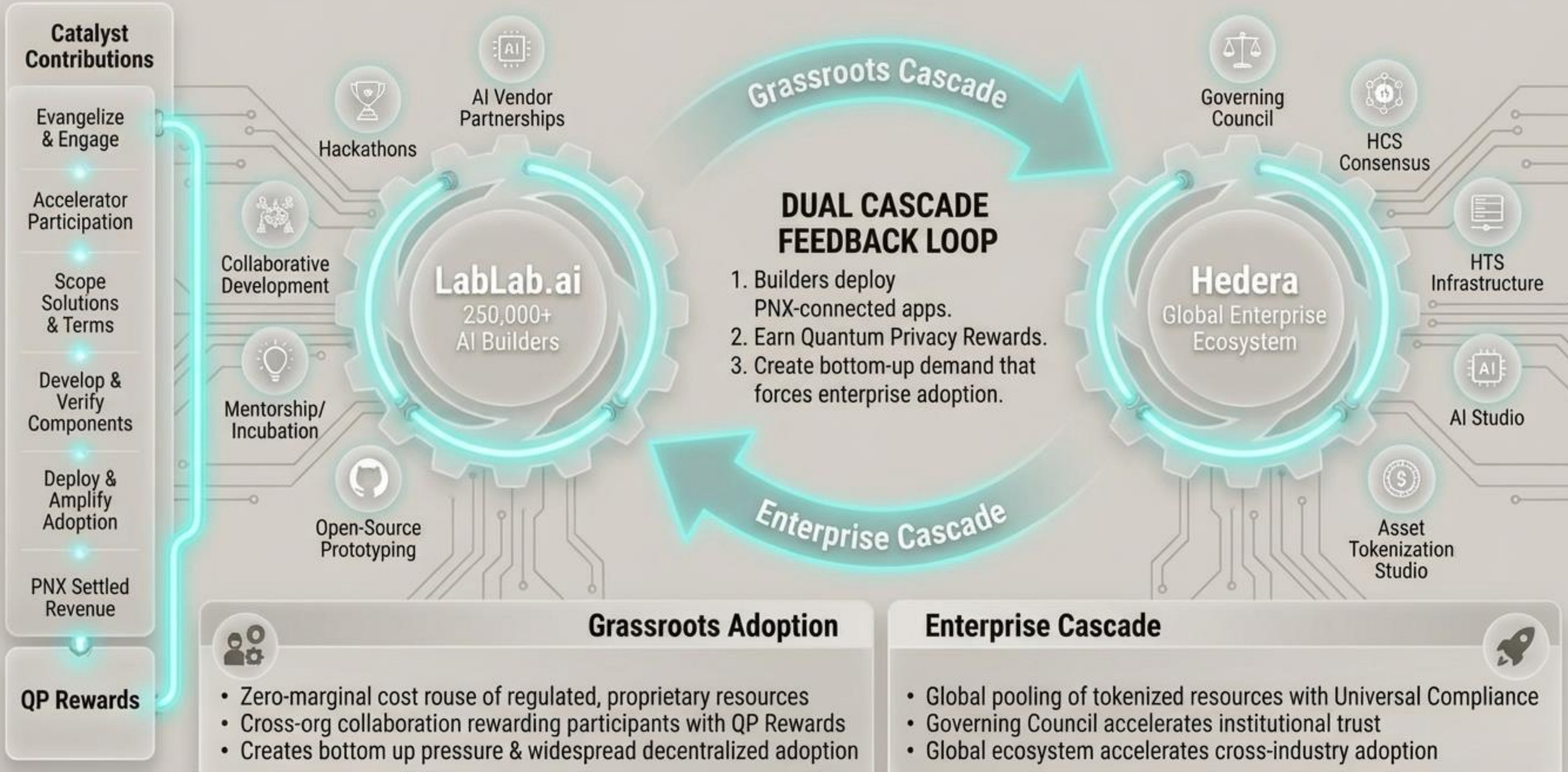
Universal Compliance



Accenture integrates Verifiable Governance across enterprise and public sector systems — providing a path to global adoption and trusted governance for QPN's Universal Compliance.

Hedera's partnerships with NVIDIA, Intel, EQTY Lab, and Accenture already deliver the hardware-rooted trust and verifiable governance that can efficiently enable QPN's Universal Compliance for AI on a global scale.

Hedera + LabLab.ai: Self-Reinforcing Grassroots & Enterprise Cascades



The Quantum Privacy Network amplifies Hedera's value with a fundamentally different business model

Current Hedera Trajectory

Economic Model — Micro-transaction fee dependency

Ecosystem Funding — Depleting HBAR Foundation grants

Governing Council — Administrative oversight body

Market Position — Competing in a crowded Layer 1 DLT space

QPN-Anchored Trajectory

Economic Model — Settlement-linked Exchange Token economics

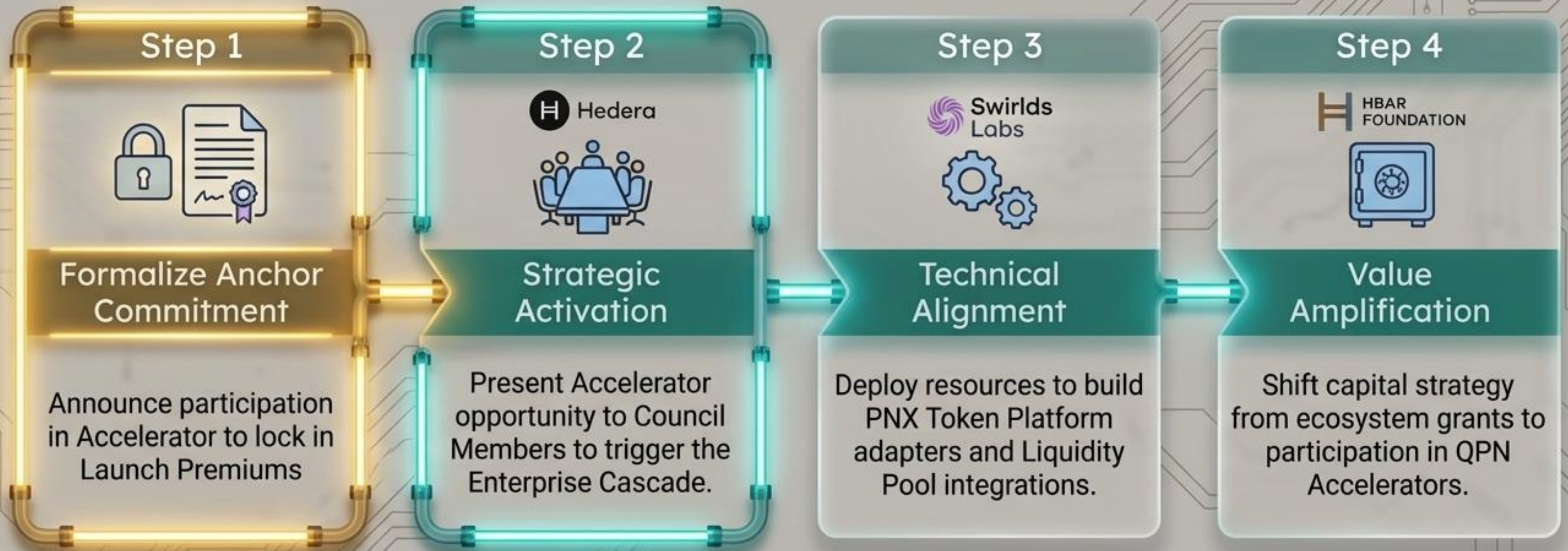
Ecosystem Funding — Compounding, self-funding Accelerator participation

Unified Trust Model — Governing Council functions as infrastructure Trust Authority

Market Position — Monopolizing the underlying substrate of the global PNX

So What?.. QPN is a structural discontinuity that allows Hedera to escape the DLT price war and ascend to an **entirely new category of macroeconomic infrastructure.**

Hedera's Path to QPN Tier 1 Anchor



So What?

The window for foundational positioning is open right now. Hedera has the technology, the governance, and the capital – it only requires the executive mandate to act.

Hedera Tier 1 Anchor: Ecosystem Value & QP Rewards

Direct PNX Economic Rights

\$12T – \$38T

Maximal cross-vertical reach: every sector's settlement routes through Hedera's consensus layer.

Accelerator Token allocations, Participant Pool flows, and infrastructure fees.

Routing Centrality & Trust Taxonomy

\$8T – \$25T

31 Council members anchor Trust Taxonomies across all major sectors.

Preferential attachment compounds as settlement layer anchoring and Council credibility attract the market.

First-Mover Hedera Community Expands To Include:

- Council member enterprises & employees
- Grassroots Participants
- Enterprise customers, vendors & partners
- AI, tokenization & solutions ecosystem
- Grassroots developers & advocates

Direct Ecosystem Capture

\$7T – \$33T

Council members, HBAR holders, Foundation, core ecosystem – amplified by active infrastructure leadership and routing centrality.

Current Market Cap: ~\$7B

First-Mover Multiple: 500x – 2,700x

Core Business Transformation

\$15T – \$32T

From micro-transaction fees to settlement-linked Exchange Token economics.

From depleting grants to compounding, self-funding Accelerator participation.

QP Rewards to Hedera Community

\$5T – \$15T+

Cross-Accelerator cascade credit from triggering multiple Tier 1 Anchors. Every contributor earns through personal Quantum Privacy Cells.

Hedera's first-mover cascade triggers QP Rewards across every Accelerator its community helps activate. The window for maximum Pioneer Rewards is months, not years.



Total Tier 1 Ecosystem Value

\$35T – \$95T

Settlement substrate + Council enterprise cascade + LabLab.ai grassroots cascade

Current Market Cap: ~\$7B

First-Mover Multiple:

500x – 2,700x

Direct Ecosystem Capture

\$7T – \$33T

Active infrastructure leadership and routing centrality create hub-level preferential attachment – flowing to Council members, HBAR holders, Foundation, and core ecosystem participants.

First-Mover Hedera Community Expands To Include:

- Council member enterprises & employees
- 250,000+ LabLab.ai AI builders
- Enterprise customers, vendors & partners
- AI, tokenization & solutions ecosystem
- Grassroots developers & advocates

QP Rewards to Hedera Community

\$5T – \$15T+

Cross-Accelerator cascade credit from triggering multiple Tier 1 Anchors. Every contributor — developers, Council member employees, LabLab.ai builders, ecosystem partners — earns through personal Quantum Privacy Cells.

Hedera's first-mover cascade triggers QP Rewards across every Accelerator its community helps activate. The window for maximum Pioneer Rewards is months, not years.

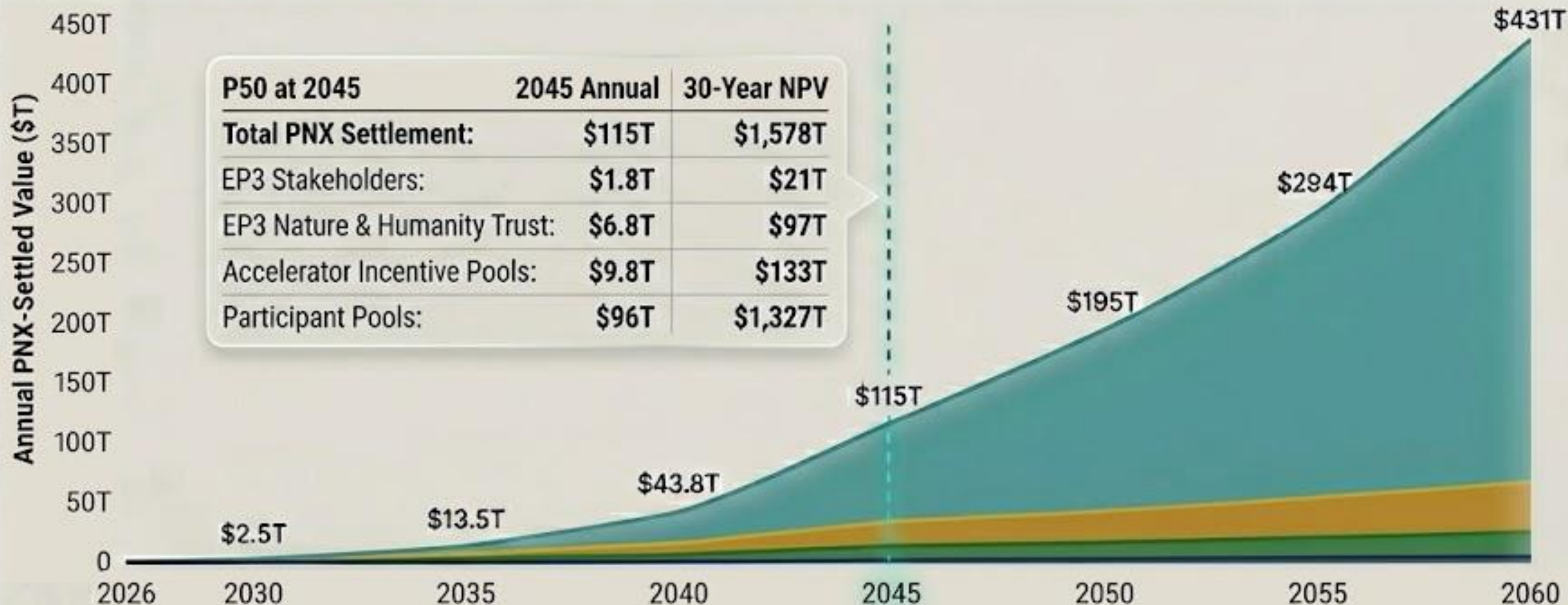
P50 Scenario (Median) – Annual PNX Settlement Waterfall

Exchange Root
(EP3 Stakeholders)

Exchange Root
(EP3 Nature & Humanity Trust)

Accelerator Incentive
& Investment Pools

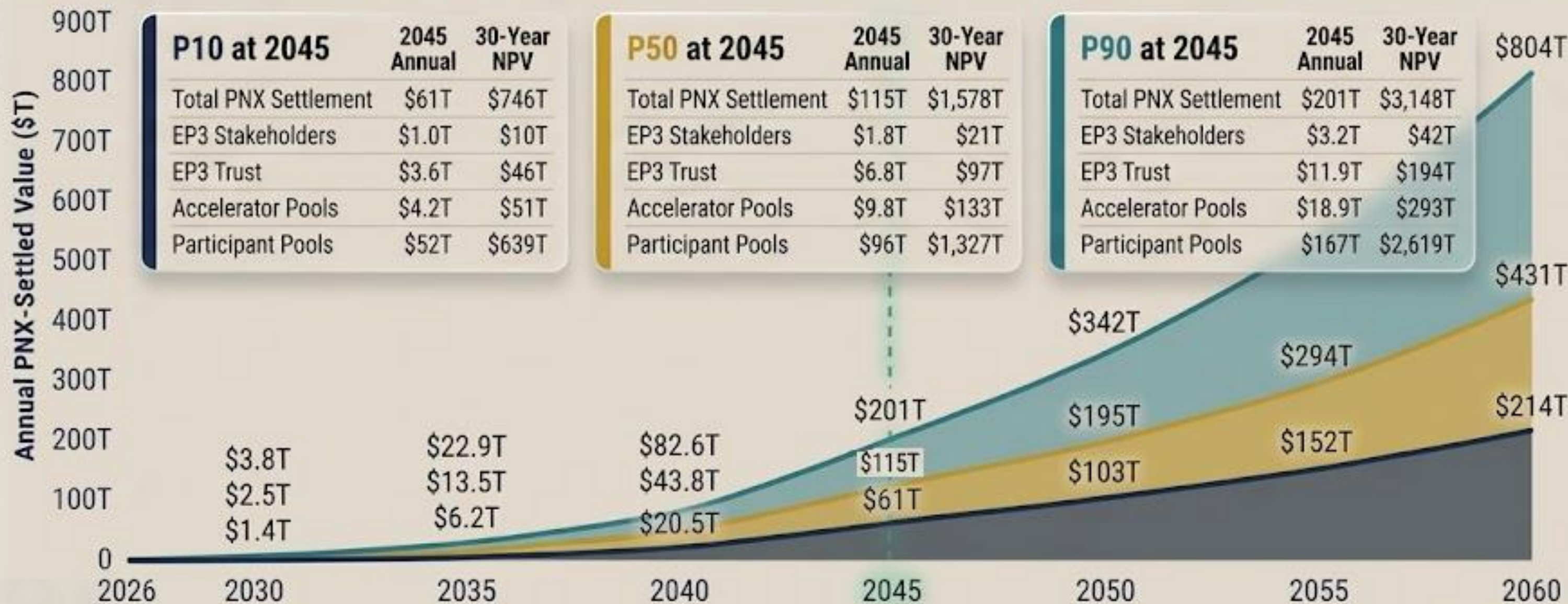
Participant Pools



GDP Growth (5yr CAGR)	2.8%	5.9%	7.3%	7.5%	5.1%	4.5%	4.5%
PNX Settlement Share	1.7%	7.0%	16.0%	29.2%	38.6%	46.8%	55.0%

PNX Settlement Projections – P10 / P50 / P90 Scenarios

— P10 Conservative (Avg GDP Growth: 4.3%)
 — P50 Median (Avg GDP Growth: 5.5%)
 — P90 Broad Cascade (Avg GDP Growth: 6.8%)



Scenario	2026	2030	2035	2040	2045	2050	2055	2060
P90 Broad Cascade	2.5%	10.5%	24.8%	39.2%	49.4%	58.7%	68.0%	68.0%
P50 Median	1.7%	7.0%	16.0%	29.2%	38.6%	46.8%	55.0%	55.0%
P10 Conservative	1.0%	3.5%	8.8%	19.6%	27.1%	33.6%	40.0%	40.0%